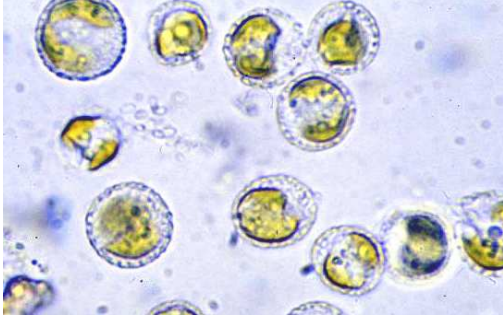


Cricosphaera (Haptophyta/Prymnesiophyta)

cells of *Cricosphaera* (W Hosja PEU)

Note the textured cell outer walls covered by minute organic scales.



Occurrences

Swan River estuary
Perth water (winter
2004)

Winslee Canals Sth
Yunderup 1993

Hotham River ca.
2003/4

Murray River 2007



Winslee Canals *Cricosphaera* scum Mandurah 1993

Photos courtesy of John Pszczola).

Perth Water *Cricosphaera* surface scum as trapped by a jetty beam in June 2004

Photo W Hosja (PEU)

